

# MuVChat™

## User Guide (v1.5.10)

(images used from older versions if no change)

### PREPARING THE MUVCCHAT PLAYER

The best option for the MuVChat player is to run on a computer with a monitor and separate connection to a projector. The movie and text messages display on the projector and the MuVChat Control Panel is accessed from the monitor. You can operate with only one display, but it is easier with a two screen configuration.

1. Connect the projector and sound system to the computer from which you will be running MuVChat.
2. Ensure the computer has an active internet connection. MuVChat will not run properly without an active internet connection. (Note: you can run MuVChat in demonstration mode without an internet connection.)
3. Start MuVChat from the desktop icon or the Windows Start button.

### MUVCCHAT DEMONSTRATION MODE

To get a feel for how MuVChat works without obtaining a MuVChat Key or Event Keyword enter 'demo' for the Event Keyword and 'mode' for the MuVChat key.

When running in demonstration mode, you are restricted to playing two minutes from title 1; chapter 1 and pre-created comments will be displayed in the text area. MuVChat will work with any DVD for demonstration mode.

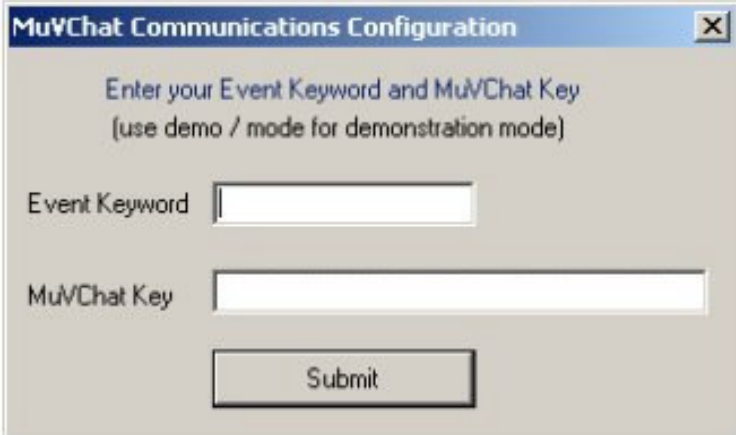
### QUICK START TO RUN A MUVCCHAT

#### 1. Connect to the MuVChat server

The first time MuVChat is started you will need to enter your **MuVChat Key**. The key only needs to be entered once as long as MuVChat remains installed on the computer.

Enter your current **MuVChat Keyword**. Enter the keyword every time you run MuVChat. When running in Entertainment mode, this keyword is the same keyword your patrons will use to participate in your MuVChat movie.

Click Submit.



MuVChat Communications Configuration

Enter your Event Keyword and MuVChat Key  
(use demo / mode for demonstration mode)

Event Keyword

MuVChat Key

Submit

MuVChat will communicate with the MuVChat servers to establish the correct authorization to run MuVChat. If no errors occur, after a few seconds the MuVChat control panel will be displayed.

#### 2. Show the Player

Click on the **Show Player** button located near the bottom of the control panel.

This prepares the display for the video. If you are operating in Entertainment mode, MuVChat connects to the SMS gateway at this time and you can receive and display text messages from this point on.

### 3. **Play the DVD**

Click on the down arrow beside the **Movie Controls** button to access the drop down list. Select **Play** to start the movie.

Most DVDs will begin playing the movie immediately, however some don't allow this, so you may need to use the Movie Controls (e.g. Next Chapter) to skip through the previews, MPAA displays, etc. to get to the title menu from which you can select the play option to begin the movie.

## MUVCCHAT TEXT MESSAGE COMMANDS

MuVChat operates in two modes: MuVChat Entertainment and MuVChat for Educators. When MuVChat is operating in the Educator mode, the text messaging capabilities are not operational. There is no visual indicator which mode you are operating in. The following information is only needed when operating in the Entertainment mode.

### **Join the chat**

1. Text the MuVChat Keyword assigned to you for this movie to 75309
2. You will get a response message saying something like:  
"Thanks for joining the chat session – reply with your message and it will be posted to the screen. Have fun!"
3. For the rest of the event, all messages sent to 75309 will go to MuVChat

### **Set your nickname**

1. Text "NICKNAME *your nickname*" to 75309
2. *your nickname* will be displayed prefixed to your messages  
NOTE: a nickname can be only one word.

### **Clear your nickname**

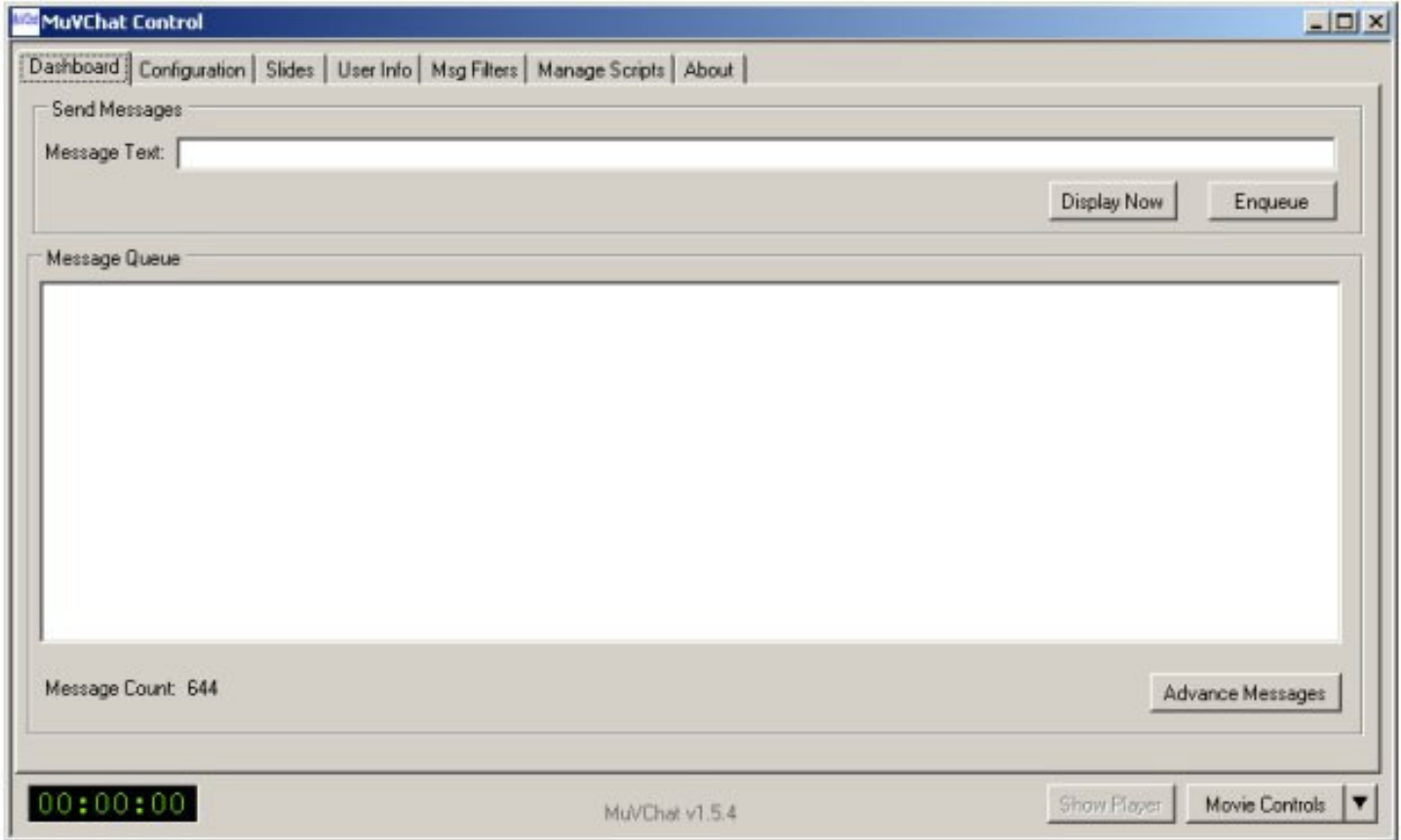
1. Text "NICKNAME" to 75309
2. This will clear your nickname and your messages will be displayed anonymously

**NOTE: The keyword to join the chat is not "MuVChat Keyword". Your keyword will be provided to you before each event.**

## COMPUTER CONSIDERATIONS WHEN RUNNING YOUR MUVCCHAT

During your MuVChat, make sure things such as screensaver, virus scans, etc. are disabled. These could negatively affect your MuVChat event if they are active.

## THE DASHBOARD TAB



Control	Explanation
Message Text	Enter messages to be displayed on screen along with other text messages
Display Now	Click this button to display the entered message immediately
Enqueue	Click this button to queue the entered message into the Message Queue
Message Queue	Shows the messages in queue for display. This includes SMS messages, enqueued messages from the Message Text box, or messages from the Comment Script. Most of the time this queue will be empty because the messages have been displayed already.  SMS command messages, such as when a user sets his nickname, are not displayed in the message queue.  Messages from banned users are not shown in the message queue.
Advance Messages	Click this button to force the messages onto the screen faster than the normal settings allow. The display settings are controlled in the Configuration tab
Message Count	Displays the number of SMS messages received. This message count includes all messages received, including messages from banned users and command messages. The count does not include messages entered by through the Message Text box or from the Comment Script.

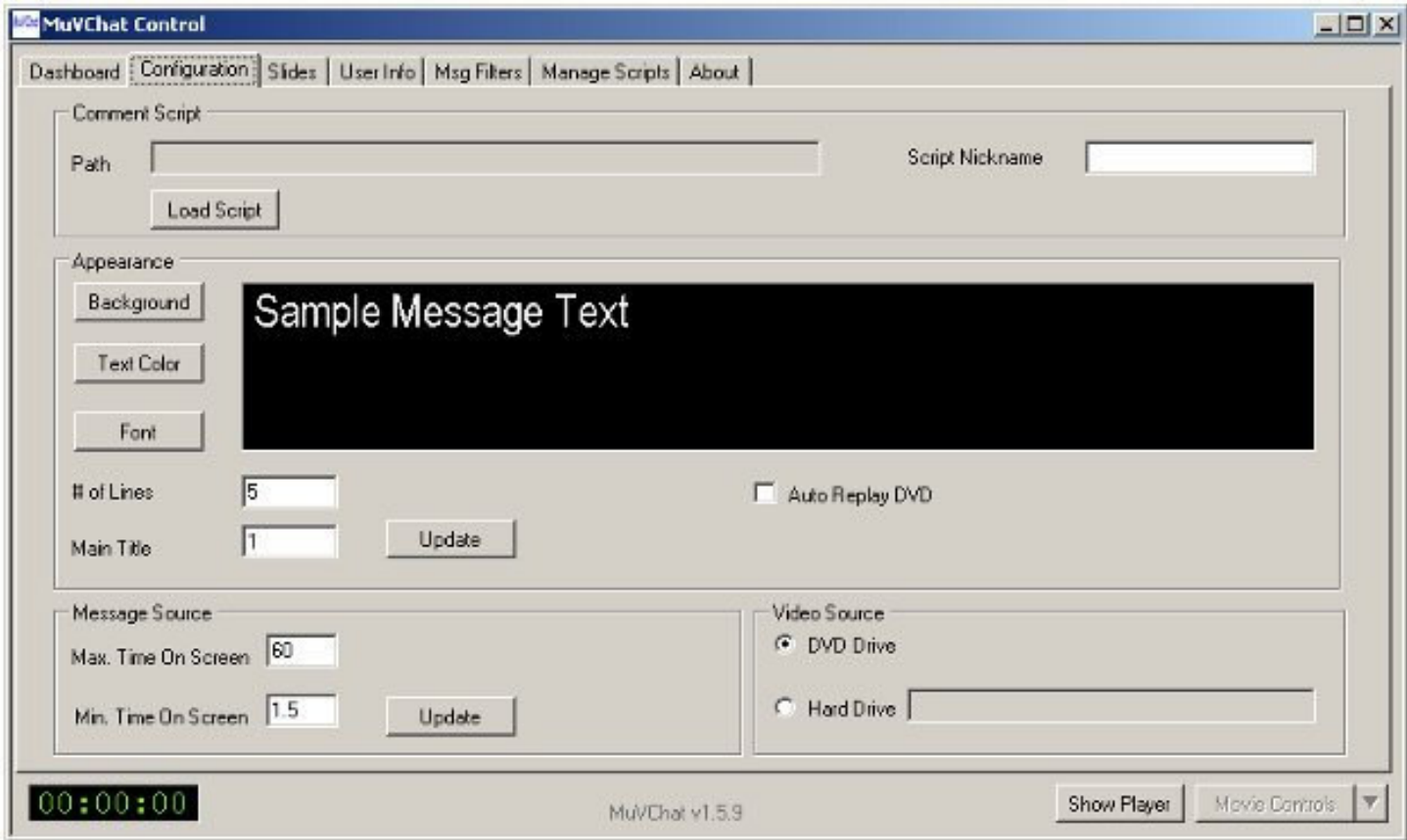
- Use this tab during the movie to watch text messages coming through and communicate with the users via the display screen.

The following controls at the bottom of the application window are available from all tabs.

Control	Explanation
00:00:00	The timer shows the current time in the DVD main title. It only updates when the main title is playing.
Show Player	Click to start the player and connect to the SMS gateway. Once you have clicked on this button, it becomes inactive (as shown here).

Movie Controls	Click to access the movie controls. These are standard DVD player controls (e.g. play, pause, stop, next chapter, previous chapter, title menu)
----------------	---

## THE CONFIGURATION TAB

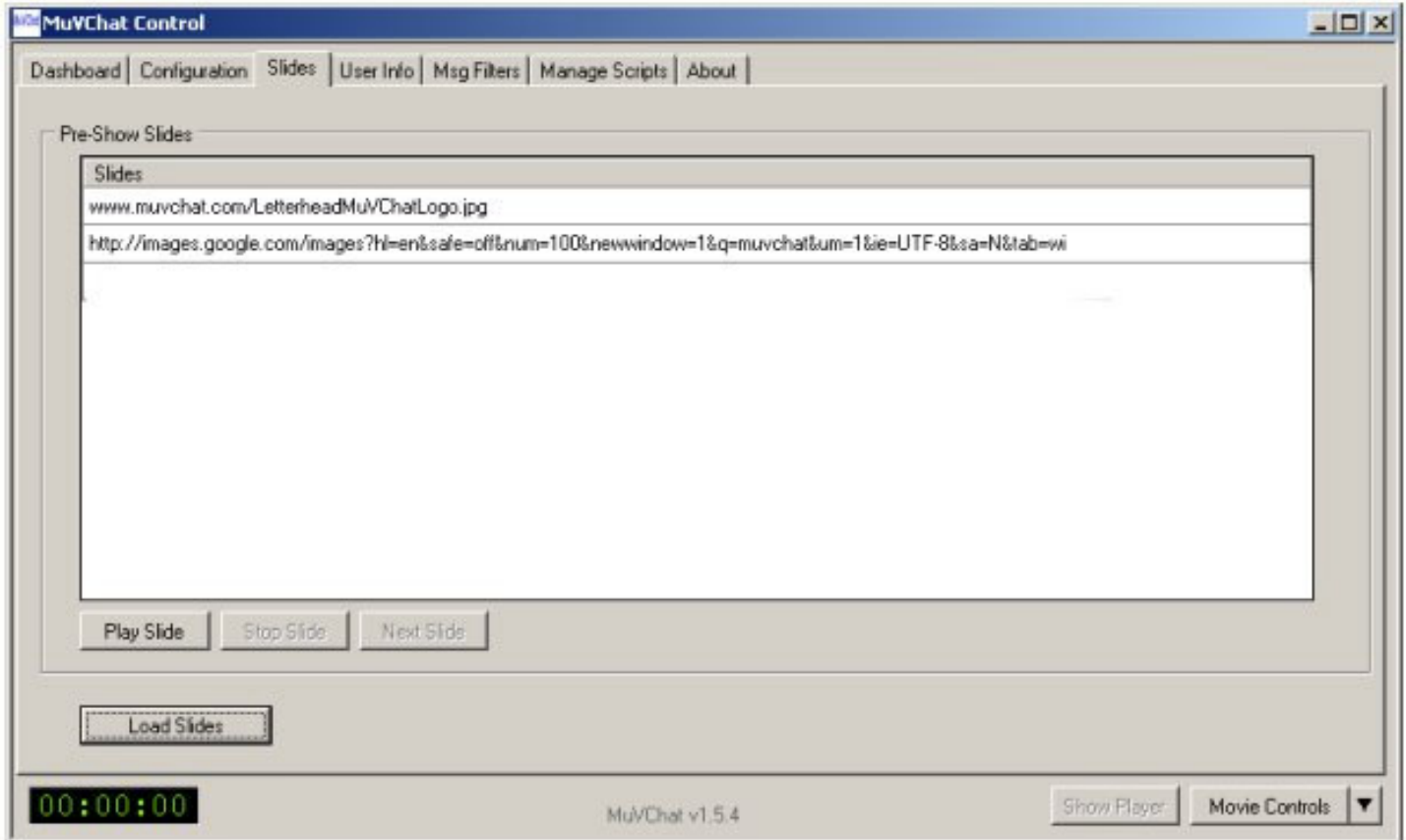


Control	Explanation
Path	Displays the path for the Comment Script. You cannot edit this label.
Load Script	Click this button to select a Comment Script to play with the movie.
Script Nickname	The value entered in this field will be prefixed to comments from the Comment Script. As long as the nickname is defined before the MuVChat begins, this name will be reserved such that no user can use this name as his nickname.
Background	Click this button to select the background color for the text message display area
Text Color	Click this button to select the text color for the text message display area
Font	Click this button to select the font for the text message display area
# of Lines	Enter the number of lines of text to show in the text message display area. The number of lines affects the size of the video display.
Main Title	The main title with which to display comments and any pre defined script. The default is title 1. If the video you are playing is not title 1, enter the right title. Unless you have multiple videos on a DVD, most likely the feature presentation will be title 1.
Update	Click to update the display screen. These settings can be changed at any time – even during the movie. The changes are not saved from showing to showing.
Max Time On Screen	Maximum number of seconds a text message is on screen
Min Time On Screen	Minimum number of seconds a text message is on screen. Is used only when there are more messages waiting in the queue to be displayed than the “# of lines “ available.
Auto Replay DVD	When this checkbox is selected the current title will be automatically replayed if the DVD allows auto-play.
Update	Update these settings. The settings can be changed at any time – even during the movie. The changes are not saved from showing to showing.

Video Source	Before the video starts you can specify the source for your video. The default is the DVD Drive. Select the Hard Drive button to display a dialog box from which you can select the folder from which to run the video.
--------------	---

- Use this tab to set various configuration options for your event.
- Try different numbers of lines and message display timings.
- As long as there are empty lines on the screen, messages will get displayed as fast as possible and remain on screen for the "Max Time". The "Min Time" only affects the timing if all display lines are used and there are messages in queue to display.

## THE SLIDES TAB

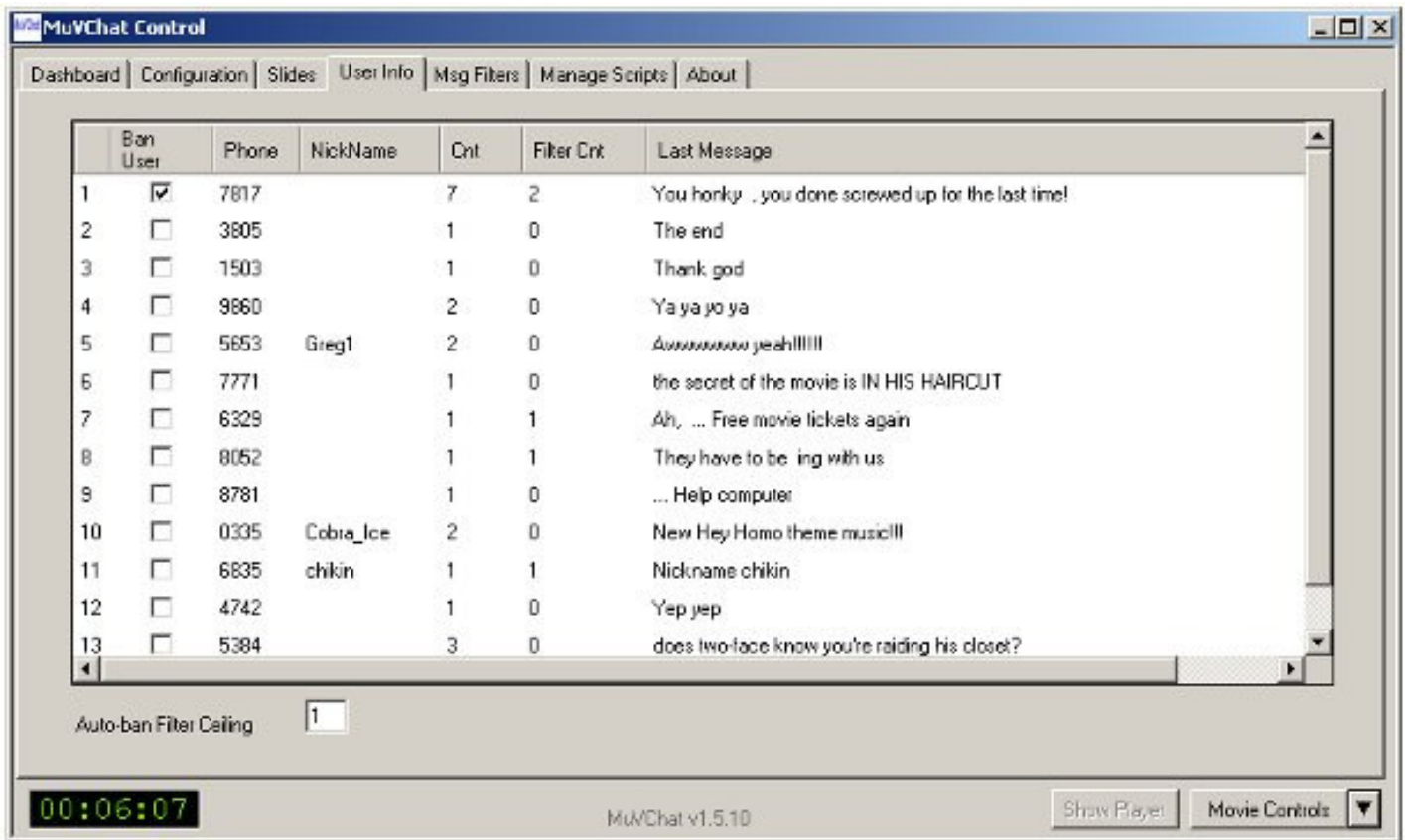


Control	Explanation
Slides	Displays the slides to be shown. The list of slides is stored on the MuVChat web servers, but the slides themselves can be located virtually anywhere. Coordinate with MuVChat staff to update the list of slides and optionally store your slides on MuVChat's servers.
Play Slide	Play the slides in your slide list. While the slides are playing, the video screen is hidden. The DVD continues to play (eg if you are on the root menu).  The slides are displayed one at a time in the order presented in the "Slides" list. The length of time for each slide is determined by the slide list (stored on the MuVChat servers).  When the slides are playing, this button will read "Pause Slide", in which case you can pause on the current slide.
Stop Slide	Stop playing slides. The video screen is restored.
Next Slide	Force the next slide in the list to display (overriding the current slide's display time).
Load Slides	Loads the slides to display from your slide list stored on the MuVChat servers. There are three possible slide lists that will be used:

1. If there is any problem connecting to the MuVChat servers to retrieve your slide file list, one default slide is presented.
  2. When running in demonstration mode, the demonstration slides are presented.
  3. If you have created a slide list and provided it to MuVChat, these slides are loaded.
- You must load the slides before you can play any slides. And you must show the player before you can load your slides.

- Use this tab to display slides before or after your feature presentation. The list of slides to use is maintained by MuVChat. Some examples for how you can use slides are:
  - Instructions to the audience to use MuVChat
  - Advertise future MuVChat events
  - Outside advertisements or sponsorships
  - Announcements
  - Pre-show entertainment (trivia, contests, etc.)
- When you select any of the movie controls (play, pause, etc.), if the slide show is playing, it will be stopped and the video screen will be restored.
- Refer to the "Slide List File" in the terminology for more details on the slide file format.
- The slides are presented using a form of Internet Explorer embedded with MuVChat. It is recommended that the navigation sound option be changed for IE so there is no 'clicking sound' when changing from slide to slide. While making this change various for different Windows versions, in general the setting is located in the Control Panel -> Windows Explorer -> Start Navigation.

## THE USER INFO TAB

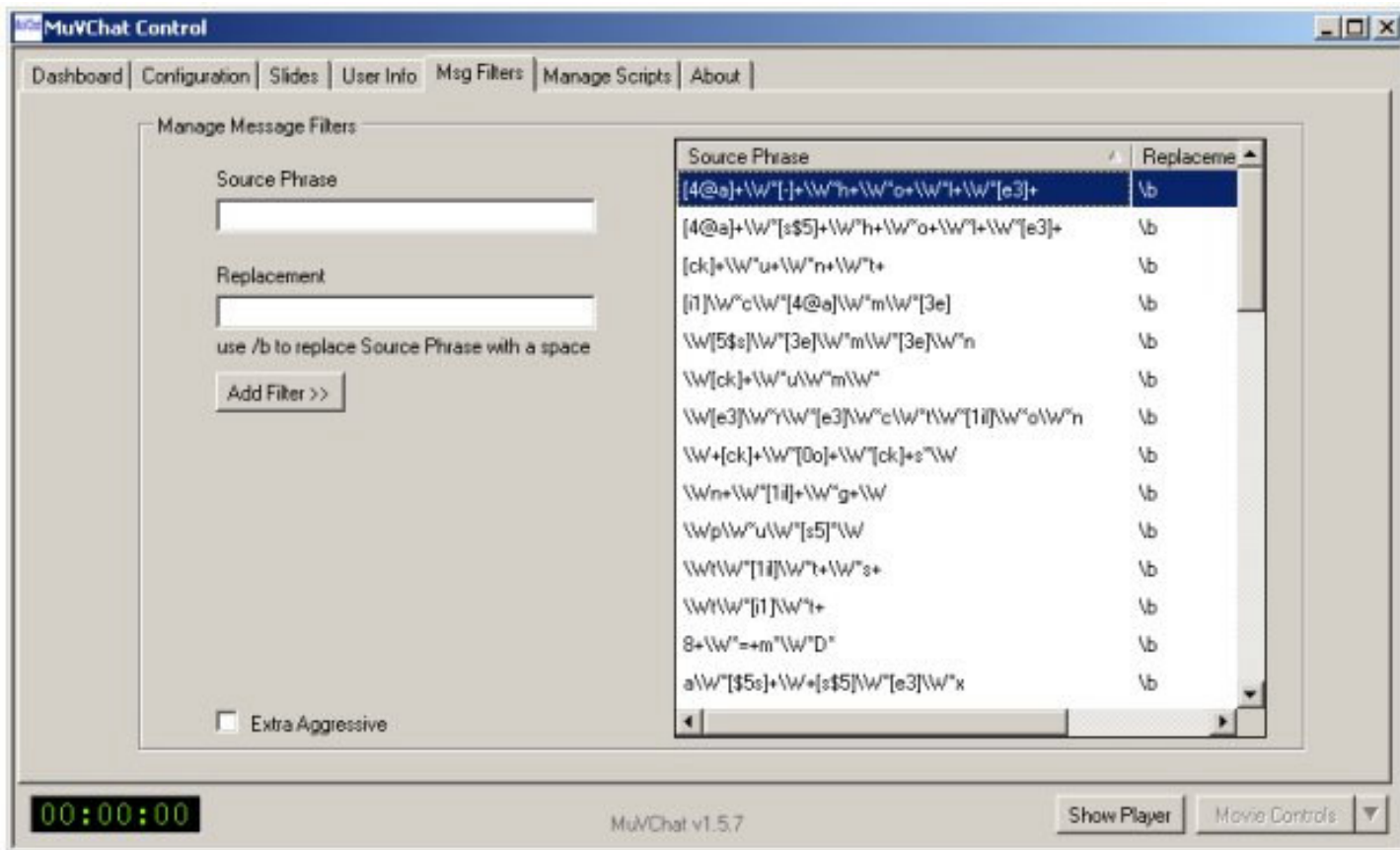


Control	Explanation
Ban User	To prevent a user's messages from being displayed, click the checkbox. To remove the ban, click the checkbox.
Phone	A partial display of the user phone number. Complete phone numbers are available after the

	show.
Nickname	The nickname the user has created – blank if no nickname defined.
Cnt	The number of messages the user has sent. This includes command messages (eg NICKNAME) and messages that are not displayed in the event the user is banned.
Filter Cnt	The number of times the user has violated the Message Filters.
Last Message	The last message the user sent. These are the unfiltered messages.
Auto-Ban Filter Ceiling	Enter a number larger than 0 to enable automated banning of users if they violate the filter more than this number of times. 0 disables auto-banning. You can manually un-ban a user after they have surpassed the ceiling, however, if they violate the filter again, they will be auto-banned.

- This tab displays information about the users participating in the MuVChat.
- Click the top of each column to sort by that column's information.
- The first column in the table represents the order in which the participants joined the chat.

## THE MSG FILTERS TAB

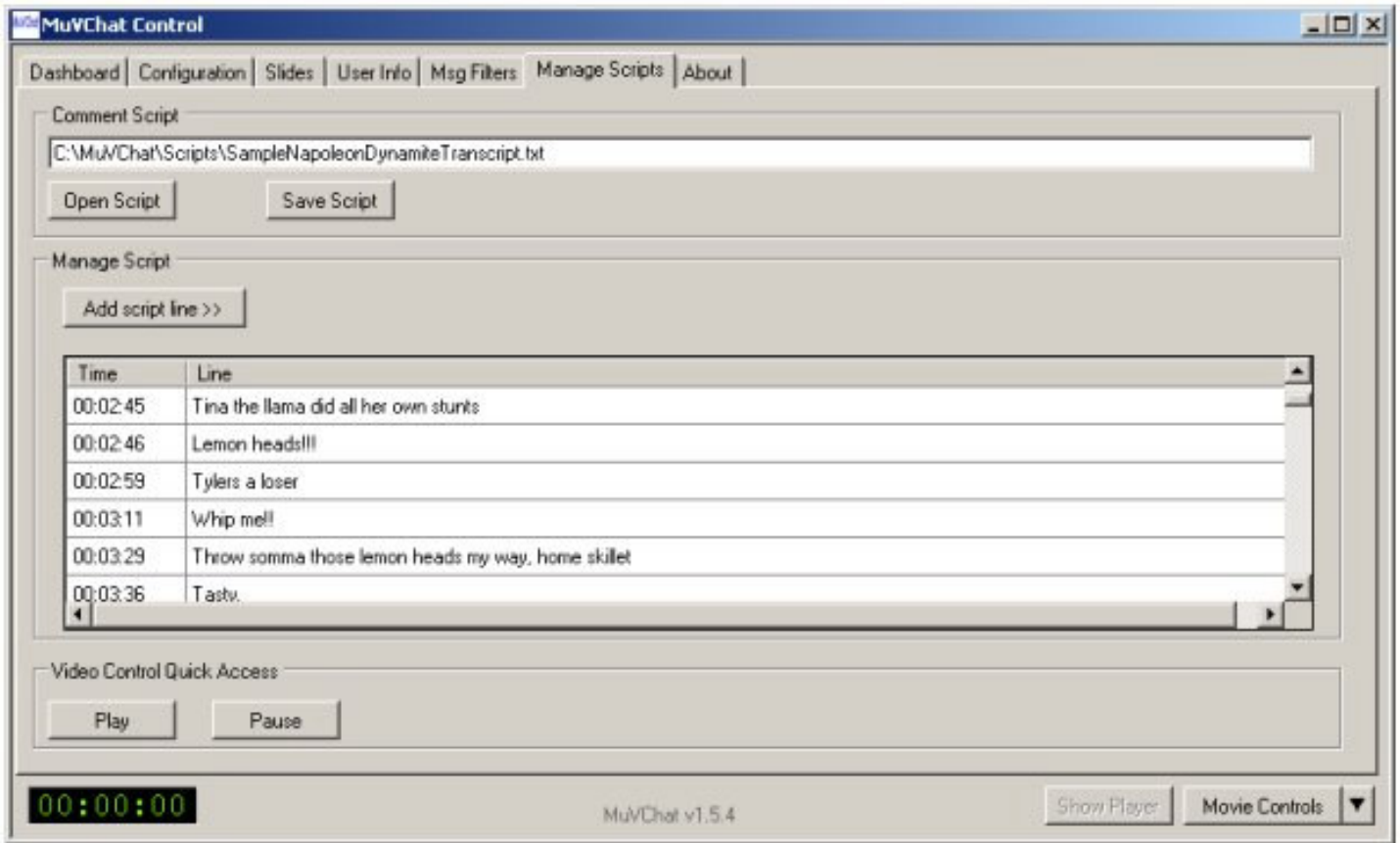


Control	Explanation
Source Phrase	Enter the keyword or phrase pattern to replace
Replacement	Enter the replacement keyword or phrase. To replace the offending phrase with a space, enter \b as the Replacement pattern.
Add Filter >>	Click to add the filter to the list. The new filter is added to the bottom of the filter list.
Source Phrase	The word or phrase to replace
Replacement	The replacement for the source phrase
Extra Aggressive	Check this box for extra aggressive filtering which removes all white space, punctuation, and numbers from the text string before running the Source Phrase pattern check. This can catch certain phrases that may not be caught otherwise (or without entering them specifically in the list). However, if a phrase is identified using the Extra Aggressive filtering, the message is presented with no spaces, punctuation, or numbers. This could result in a mangled message – but provides much more aggressive filtering when

desired.

- Use this tab to manage the filtering applied during this MuVChat. Any string pattern that matches the pattern of characters listed in the "source phrase" will be replaced with the corresponding string from the "Replacement" column.
- You can use explicit words or phrases or patterns (shown in the image). Refer to the "Msg Filter Patterns" section at the end of this document for further information.
- To delete a filter, click the row of the identified Source Phrase and hit the Delete key. You will not be prompted for confirmation; the filter will be removed immediately.
- To sort the filter list, click on the top of the filter list columns to sort by the information in the respective column.
- Changes to the filters are automatically saved when you move to another tab.

## THE MANAGE SCRIPTS TAB



Control	Explanation
Text box	The name of the script you are managing. You can either enter the name directly, or use the "Open Script" button to browse for a script.
Open Script Button	Click to browse for a script to manage.
Save Script Button	Click to save the script from the Script grid to a file.
Add script line >>	When you click this button, the following actions occur: <ul style="list-style-type: none"><li>- The video is paused</li><li>- A new line is inserted at the top of the script grid with the current timestamp from the video</li></ul> You can now edit the line in the grid (as per below). Click Play to restart the video.
Script grid	Displays the script you are managing. Functions you can perform:

	<ul style="list-style-type: none"> <li>- Click on a row and select F2 to edit the Line. The Time cannot be edited.</li> <li>- Click on a row and hit delete (from the keyboard) to delete a row.</li> <li>- Click the top of the Time or Line columns to sort the script by that column.</li> </ul>
Play	Play button provided for quick access to play the video
Pause	Pause button provided for quick access to pause the video

- This tab is used to manage a script. You can create a new script or edit an existing script.
- Use the video controls (Movie Controls arrow) to jump from chapter to chapter. The script does not need to be created in chronological order. It will be sorted by time before it is saved to ensure proper playback.
- While the script is not played in MuVChat from this tab, you can open the script in the "Configuration Tab" at the same time to watch it play out and edit as necessary through this tab.
- Remember to save the script when finished.
- The script can be manually managed outside of MuVChat – refer to the "Terminology To Know" section below.

## Ways to use MuVChat Scripts

Create your own script to run during a MuVChat movie. For example:

1. Schedule reminder messages informing the audience how to use MuVChat commands
2. Provide director's commentary or trivia annotations from IMDB or other sources
3. Insert localized comments (here in Chicago we get a lot of mileage from Blagojevich and the Cubs)
4. Run trivia contest questions and award prizes after the movie
5. Others ??

## TERMINOLOGY TO KNOW

**Comment Script** A file containing lines comments that are played back in synch with the movie when the "Play and Start Script" option is selected. The Comment Script is a tab separated file where each line contains:

<time in seconds>      <comment>

where

<time in seconds> is the 0 based time offset the comment should be displayed  
 <comment> is the comment to display

**MuVChat Key** A 32-character key you are assigned for registration and operation of your MuVChat player. Save this key as it is required to run MuVChat

**MuVChat Keyword** The keyword assigned to you for a particular movie showing. This keyword is entered in the MuVChat player startup dialog box to communicate with the MuVChat servers and is texted by your users to join the chat.

A MuVChat Keyword is only valid for a limited time.

## Slide List File

A file containing lines for files to present as pre or post-show slides. These can be web pages, text files, images, etc. The files can be stored on a local computer, network server, or remote web server. The format of the file is a tab separated file where each line contains:

<time in seconds>      <file path or URL or BLANK>

where:

<time in seconds>      is the number of seconds to display this slide

<file path or URL or BLANK>      is the URL for a slide or the complete path for the file. The complete path (drive letter included) must be provided for a file not hosted on a web server. Enter BLANK and the slide window will be replaced with the video window (if the video window is playing). If the video is not playing, the prior slide will remain on screen.

When slides are played, MuVChat presents a slide for <time in seconds> seconds then displays the next slide. The slide list is repeated until manually stopped by the operator.

## SMS Gateway

The system which collects the user's SMS messages and provides them to MuVChat

## MSG FILTER PATTERNS

MuVChat can replace literal words or phrases or use patterns to match. These patterns are called regular expressions. This section will not fully explain regular expressions, but just enough to explain the basic use. You can use fully formed regular expressions that are much more complicated than those that come with the standard MuVChat installation. The Replacement phrase does not use regular expressions, but rather a literal string or a \b to indicate a blank.

Common regular expression terms used in MuVChat

Pattern	Explanation
\W	Match any non-word character. Matches white space (spaces, tabs, etc.), punctuation, etc.
[]	Match any of the characters within the brackets
+	Match one or more of the preceding characters or special characters
*	Match zero or more of the preceding characters or special characters

To provide examples, without including offensive language in this document, examples will be shown using commonly acceptable words.

Pattern	\Wb+\W*[a4@]+\W*d+																
Explanation	Must match: <ul style="list-style-type: none"><li>- one non-word character then</li><li>- one or more consecutive letter 'b' (case insensitive) then</li><li>- zero or more non-word characters then</li><li>- one or more consecutive letter 'a', '4', or '@' (case insensitive and this covers leet spelling) then</li><li>- zero or more non-word characters then</li><li>- one or more consecutive letter 'd'</li></ul>																
Example Matches	<table><tbody><tr><td>Bad</td><td>b.a.d</td><td>B4D</td><td>badly</td></tr><tr><td>BAD</td><td>b 4 d</td><td>B-4-D</td><td>ba dly</td></tr><tr><td>BBBAAAAAADD DDDD</td><td>BbaAdD</td><td>b ad</td><td>B@dding</td></tr><tr><td>b b b 4 44 4 4 d d d d</td><td>b@d</td><td>B @D</td><td>bb 44 dy</td></tr></tbody></table>	Bad	b.a.d	B4D	badly	BAD	b 4 d	B-4-D	ba dly	BBBAAAAAADD DDDD	BbaAdD	b ad	B@dding	b b b 4 44 4 4 d d d d	b@d	B @D	bb 44 dy
Bad	b.a.d	B4D	badly														
BAD	b 4 d	B-4-D	ba dly														
BBBAAAAAADD DDDD	BbaAdD	b ad	B@dding														
b b b 4 44 4 4 d d d d	b@d	B @D	bb 44 dy														
Does not match	Tbad      Bald      b b a a t a a d d																

Regular expression patterns are very powerful for matching offending terms in the text messages. You can define a phrase that matches more than you intended to match. However, since the intent of the Msg Filter is to keep the language of the text comments appropriate, it is probably better to err on the side of filtering than to let language get displayed that is offensive.

While you can use literal strings as the replacement phrase, it is recommended to use the \b special character to simply replace the offending term with a blank. This tends to diffuse the shock value of audience members using the offending term.

While your MuVChat is running, if a phrase occurs that wasn't caught with the existing source phrase patterns, you can enter that phrase as a literal term, and later create a regular expression that catches all the permutations of the offending term.

## SYSTEM REQUIREMENTS

- Windows XP or better PC with DVD drive and enough horsepower to play a DVD
- Windows .Net Framework 2.0 (available from [www.microsoft.com](http://www.microsoft.com))
- Windows DirectX 8.1 (available from [www.microsoft.com](http://www.microsoft.com))
- Internet connection
- Video connection to drive an external video projector
- Audio connection to external sound system
- Optional – dual video card to drive a monitor and external projector

For questions and assistance, please contact [webmaster@muvchat.com](mailto:webmaster@muvchat.com)